



## Riverlight 4, Riverlight Quay, London, SW11 8DW

£825 Per Week

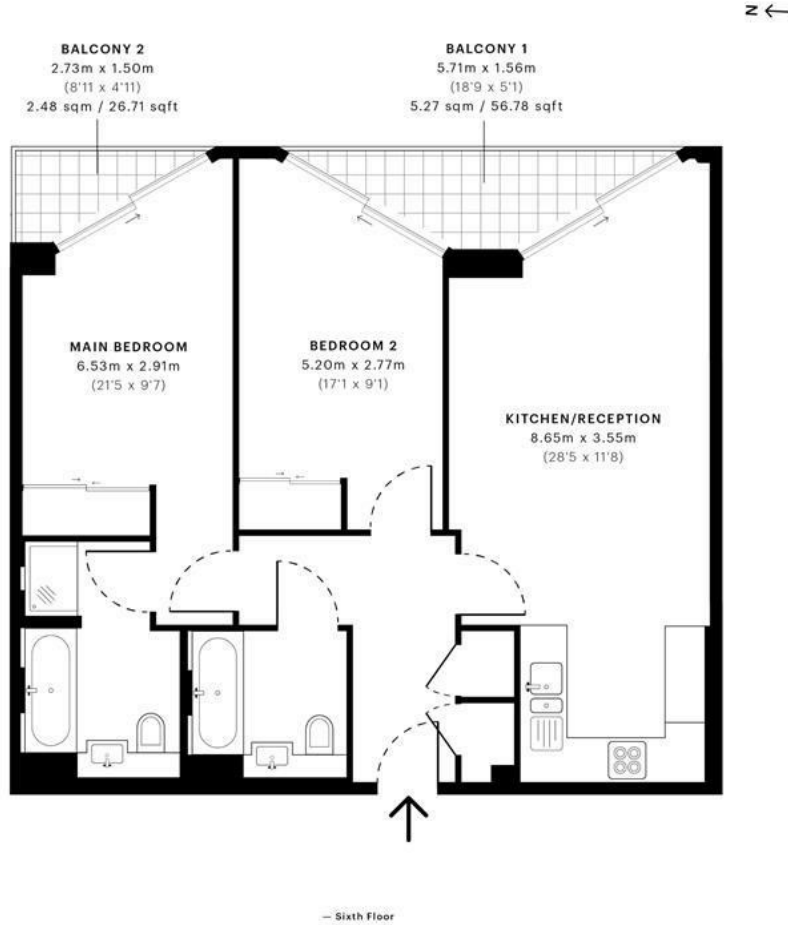
\*\*\*VIDEO VIEWING AVAILABLE\*\*\*

A smart well presented two bedroom two bathroom apartment situated in the Riverlight Quay development. This luxurious flat comes with a fully fitted kitchen, wooden flooring throughout, carpeted rooms, air-conditioning, a separate shower and bathtub in the en-suite, spacious balcony with views overlooking the River Thames.

Both Professionals and Students are welcome.

Riverlight Quay residents have access to top-of-range well-managed facilities such as the Gym, Swimming Pool, Sauna, Cinema room, Virtual Golf & Lounge area. Numerous transport links giving access to all over London with minutes such as the Vauxhall tube station & Battersea Park station. You also have lots of local high street superstores, amenities and restaurants within walking distance.

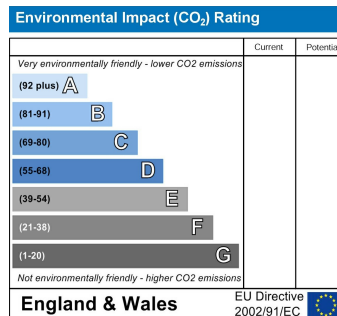
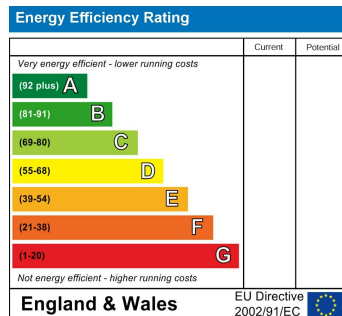
- Very Modern Open Plan Kitchen/ Reception Room
- Two Double Bedrooms
- Two Bathrooms
- Fully Fitted Kitchen
- Air Conditioning Throughout
- Two Separate Private Balconies
- River View
- On Site Facilities (Gym, Swimming Pool, Sauna, Cinema Room, Virtual Golf & Communal Garden)
- 24 Hour Concierge
- Lift Access



Spec Verified floor plans are produced in accordance with Royal Institution of Chartered Surveyors' Property Measurement Standards. Plots and gardens are illustrative only and excluded from all area calculations. Due to rounding, numbers may not add up precisely. All measurements shown for the individual room lengths and widths are the maximum points of measurements captured in the scan.

IPMS 3B RESIDENTIAL 81.14 sqm / 873.38 sqft  
IPMS 3C RESIDENTIAL 77.66 sqm / 835.93 sqft

spec id: 6061a35afda4be0dccc2b02a



Admin fee: £ inclusive of VAT | Reference Fee: £ inclusive of VAT per application | Inventory Fee may also apply